

• Describing datasets (2)

IST400/600

Jian Qin

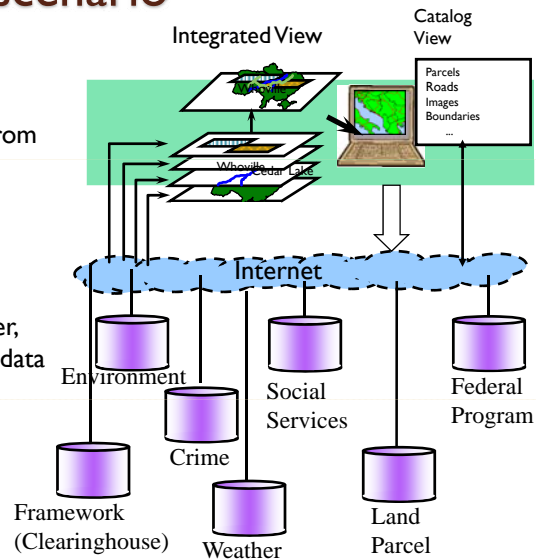
An analogy

Nutrition Facts	
Serving Size 1/2 cup (114g)	
Servings Per Container 4	
Amount Per Serving	
Calories 90	Calories from Fat 30
% Daily Value*	
Total Fat 3g	5%
Saturated Fat 0g	0%
Cholesterol 0mg	0%
Sodium 300mg	13%
Total Carbohydrate 13g	4%
Dietary Fiber 3g	12%
Sugars 3g	
Protein 3g	
Vitamin A 80%	Vitamin C 60%
Calcium 4%	Iron 4%
*Percent Daily Values are based on a diet of other people's misdeeds.	
Calories: 2,000 2,500	
Total Fat	Less than 65g 80g
Sat Fat	Less than 20g 25g
Cholesterol	Less than 300mg 300mg
Sodium	Less than 2,400mg 2,400mg
Total Carbohydrate	300g 375g
Dietary Fiber	25g 30g
Calories per gram:	
Fat 9 • Carbohydrate 4 • Protein 4	

- What a nutritional label tells us about the food?
- Mandatory and voluntary components in the label

A use case scenario

- Discover, access, and retrieve data and views from multiple servers
- Query and update
- Provide interface for visualization, decision support, etc.
- Support geocoded raster, vector, matrix, and other data



Source:

http://geongrid.org/CSIG05/presentations/IlyaZaslavsky/4_webGIS_sources.ppt

Describing datasets

3

Metadata for users

- Support various search options (similar to using a library catalog)
- Help users decide the fitness of a dataset for use
- Provide information for handle data effectively, e.g. format
- Assist in identifying notable data contents, e.g. find images of an interesting hurricane

Metadata is expensive to generate,
but the benefits are substantial

Describing datasets

4

Metadata for data management

- Preserve the data history so that it can be re-used or adapted,
- Assess the age and character of data holdings to determine which data should be maintained, updated, or deleted,
- Instill data accountability by requiring you to state what you know about the data and realizing what you don't, but should, know about your data
- Limit data liability by explicitly designating the effective and administrative limits of use of the data. [View an example](#)

Describing datasets

5

Metadata for project management

- Plan and document the data types and content needed to support the project
- Monitor data development by regular review of the process steps completed and recorded within the metadata
- Provide all project participants a common language of attributes and process methods and a place to record and share their progress
- Access the lineage and content of outsourced data production by requiring robust metadata as a contract deliverable.

Describing datasets

6

Types of data standards

- Data Classification
e.g., Vegetation Classification
- **Data Content**
e.g., Digital Geospatial Metadata, Spatial Schema
- Data Symboly or Presentation
e.g., Digital Geologic Map Symbolization
- Data Transfer
- Data Services (Web Mapping, Feature)
- Data Usability
e.g., Geospatial Positioning Accuracy

Describing datasets

7

The U.S. FGDC metadata standard

Content Standard for
Digital Geospatial Metadata
(CSDGM)

Extensions

Extensions for
Remote Sensing
Metadata

Biological
Data Profile

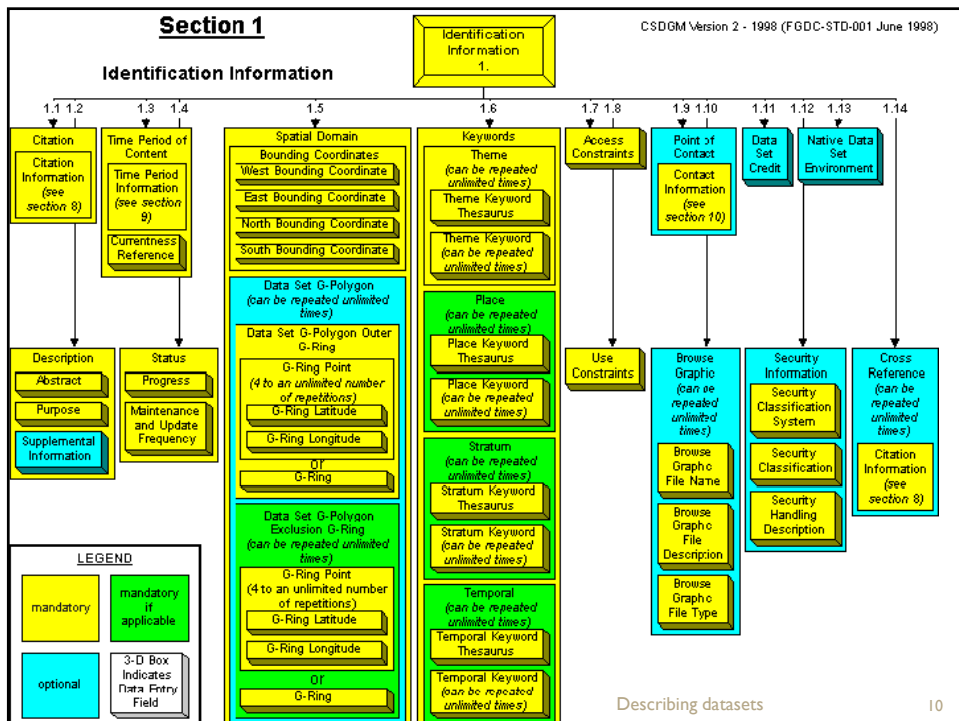
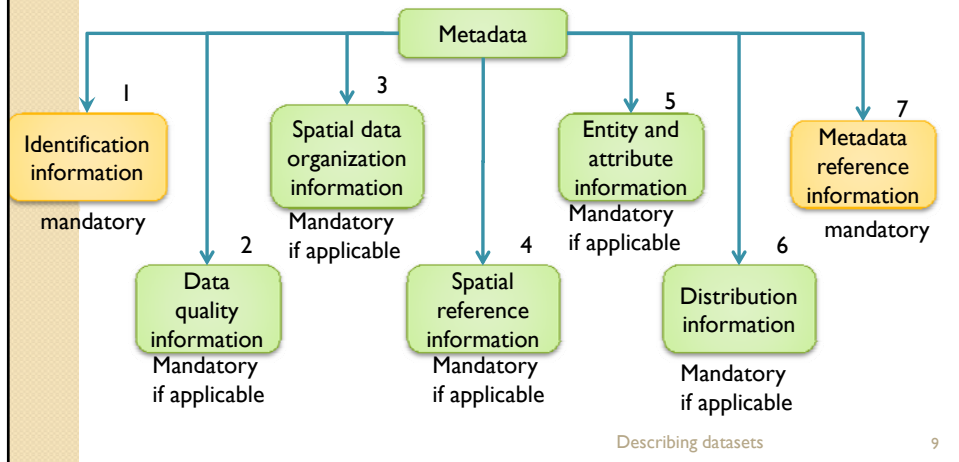
Metadata Profile
for Shoreline Data

Describing datasets

8

Content Standard for Digital Geospatial Metadata (CSDGM)

- Sections
- Compound elements
- Data elements



Data element

- **Form:**

Data element name -- definition.

Type: (choice of "integer", "real", "text", "date", or "time")

Domain: (describes valid values that can be assigned)

- **Example:**

Abstract -- a brief narrative summary of the data set.

Type: text

Domain: free text

Describing datasets

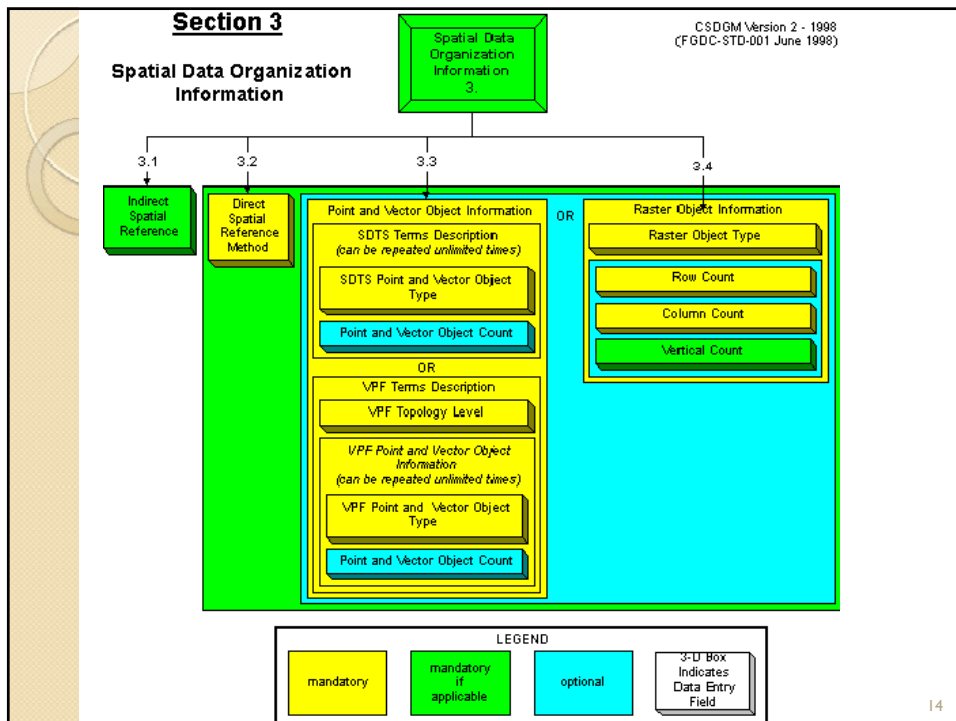
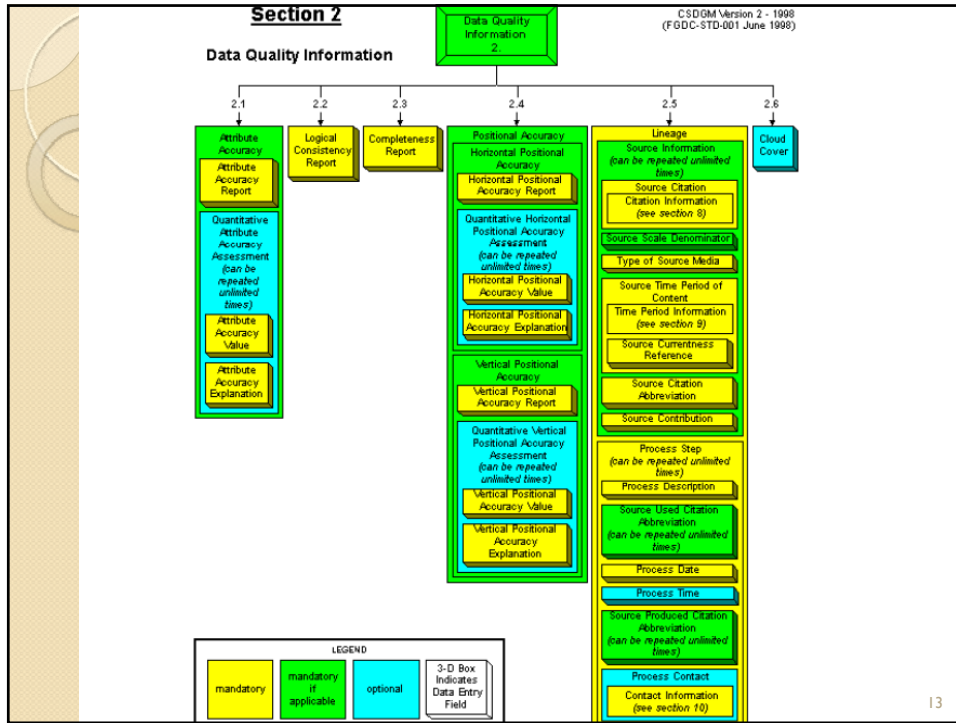
11

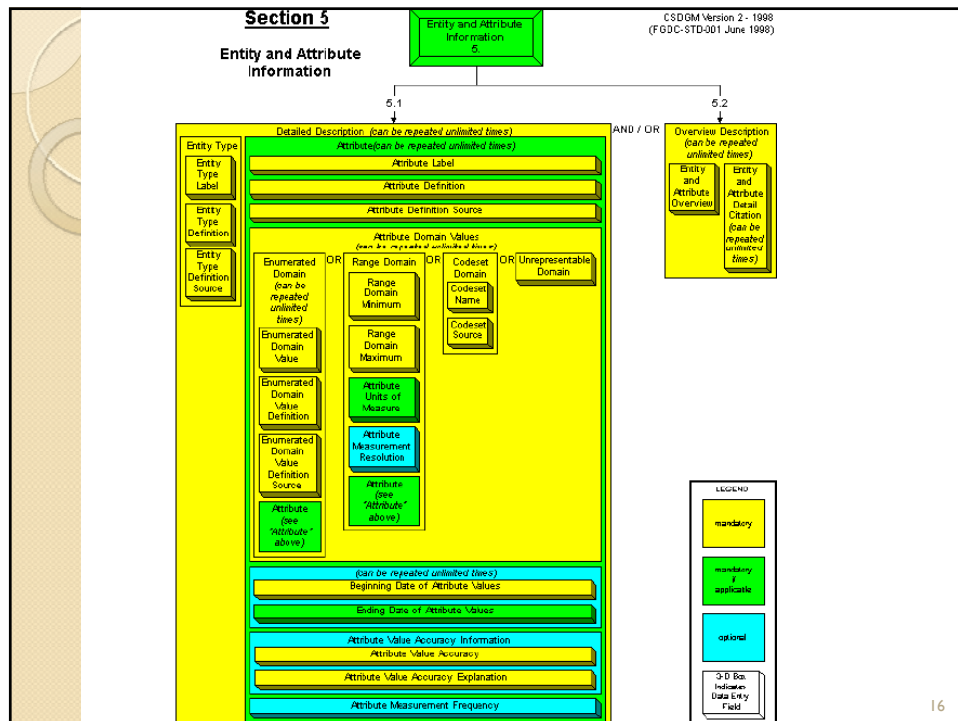
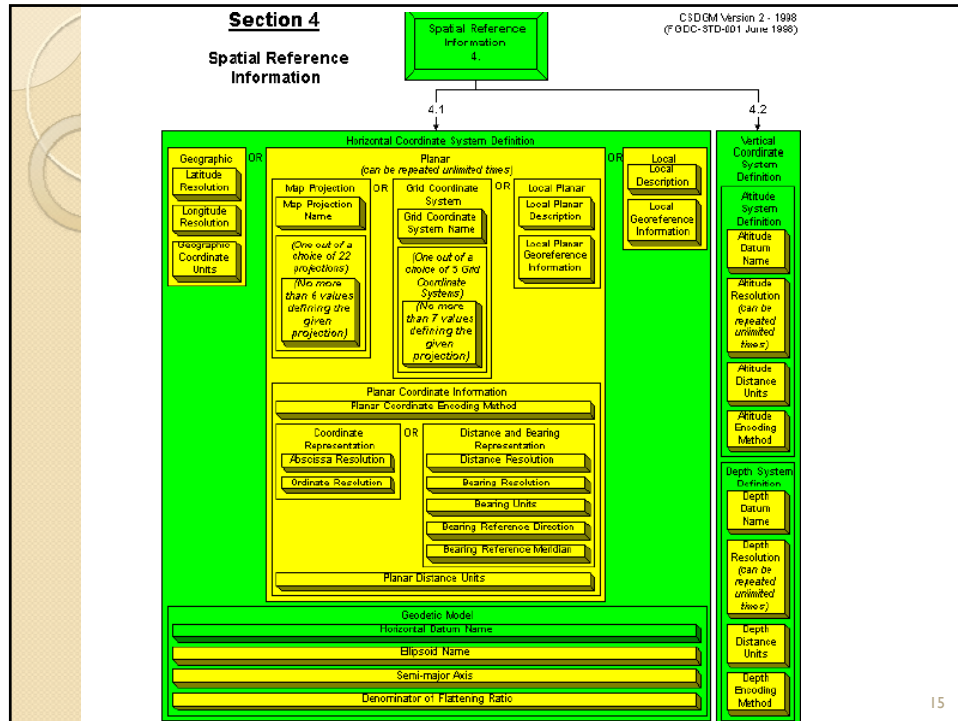
Data element: values

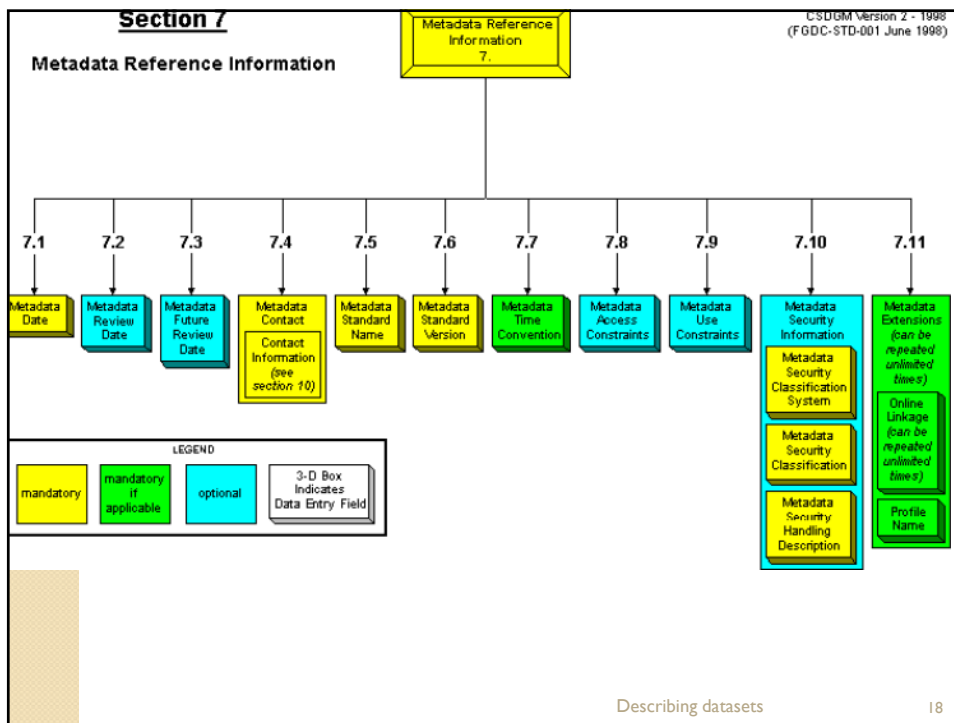
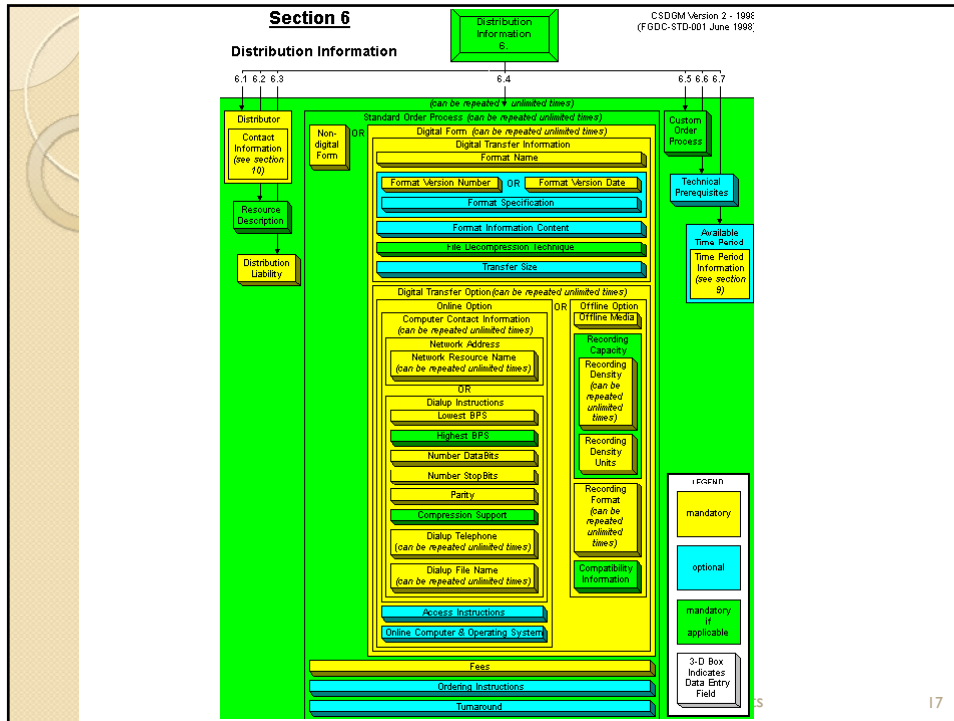
- The **domain** of values for a data element:
 - may be specified only by type. In these cases, the domain is described by the word "free" followed by the type (for example, free integer, free text).
 - may be specified by a list of values, references to a list of values, or a range of values.
 - may be partly specified by a set of values, followed by the "free" convention. In this case, values should be selected from the provided set; if no value is adequate, the user may provide one.

Describing datasets

12







Implementation decisions

- What is the best time to collect metadata?
- Who is this for, anyway?
 - Management – catalog – transfer
 - Details, details
- Legacy data and the future

Describing datasets

19

Using tools to create metadata records

- Online utility
 - MetaScribe
<http://www.csc.noaa.gov/cgi-bin/id/metadata/metascibe/metascibe.cgi>
Demo: [example template file](#)
- Stand alone
 - Metavist demo

Describing datasets

20